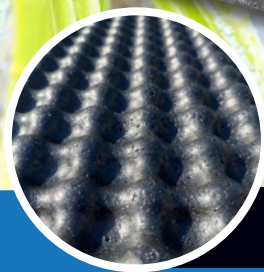
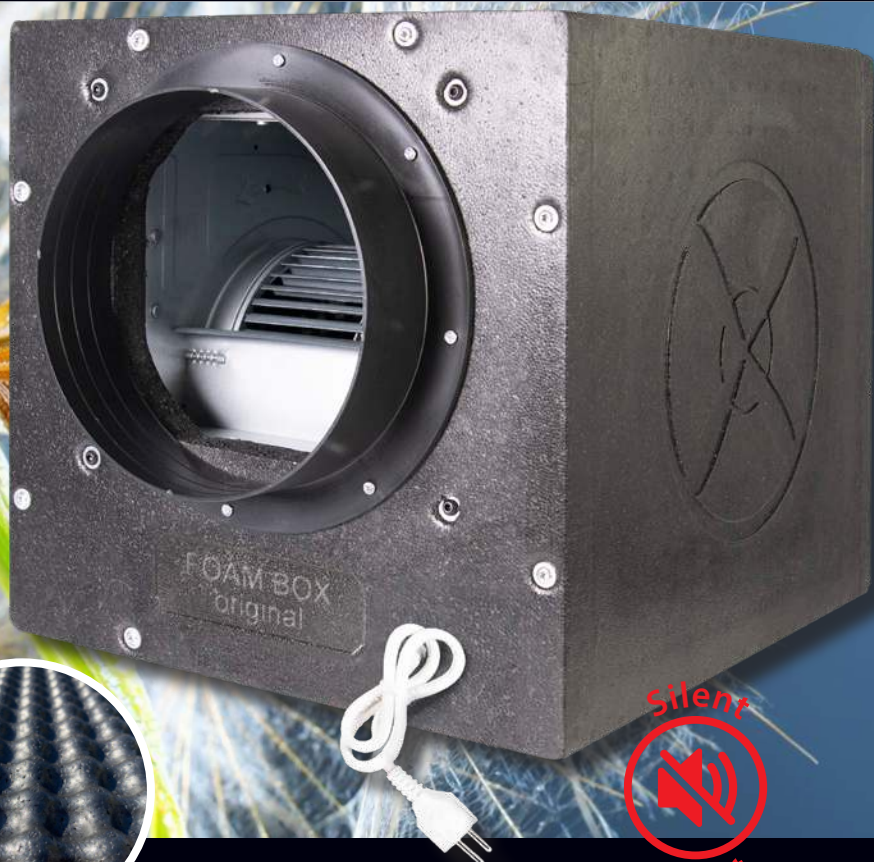


FOAM Ventilation Box



Important features

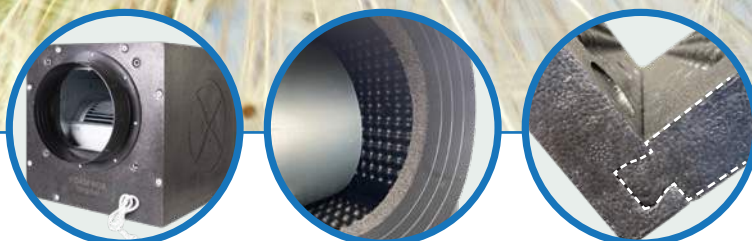


Air-tight

Air-tight

- ⊗ Tolerated temperature (-40 to 110 °C)
- ⊗ Vibration dampering
- ⊗ Thermal insulation
- ⊗ Light weight
- ⊗ Robust material
- ⊗ Resistant to Bacteriae and fungi
- ⊗ Recyclable
- ⊗ Waterproof
- ⊗ Shock absorbing
- ⊗ Air-tight

FOAM Ventilation Box



Technical standard characteristics per model

Product name	Code	M3/h	Max. AMP*	Measurements (cm)	Weight (kg)
FOAM250	FMB6250	250m3/h	0,25	32x32x38	4,50
FOAM550	FMB6550	550m3/h	0,68	32x32x38	5,00
FOAM750	FMB6750	750m3/h	1,20	32x32x38	5,00
FOAM1200	FMB790	1200m3/h	0,88	42x42x48	10,50
FOAM1500	FMB714	1500m3/h	2,01	42x42x48	10,00
FOAM2000	FMB90016	2000m3/h	2,35	52x52x58	17,50
FOAM2500	FMB90013	2500m3/h	2,43	52x52x58	18,00
FOAM3250	FMB91400	3250m3/h	5,45	52x52x58	18,00
FOAM4250	FMB1014	4250m3/h	7,70	52x52x58	19,50
FOAM5000	FMB1299	5000m3/h	5,60	62x62x68	21,50
FOAM6000	FMB12129	6000m3/h	6,25	62x62x68	27,00
FOAM7000	FMB121211	7000m3/h	6,50	62x62x68	27,50

Voltage: 1/phase – 230/50HZ

*Maximum amperage of loose fan. If the pressures changes, changes in the amperage will happen.

We gladly offer high adaptation to any particular demands or customizations, that can be handled with quickness and flexibility, for any size of order.

Each Box Fan is individually inspected and tested before leaving the factory.

Technical appendix of each model available by request:

- ⊗ Technical drawing with dimensions expressed in mm
- ⊗ Chart of static pressure, wattage, amperage, RPM
- ⊗ Decibel tests

